

ANNAPOLIS VALLEY REGIONAL INDUSTRIAL PARK KENTVILLE, NS

40 Acres +/- Available

- ✓ Highway 101 Frontage Available
- ✓ Adjacent to Exit 14, Highway 101
- ✓ Located on the Donald E. Hiltz Connector
- ✓ Large and Small Lots Available
- ✓ Municipal Sewer and Water
- ✓ County Tax Rate

HIGHWAY 101 LOOKING WEST



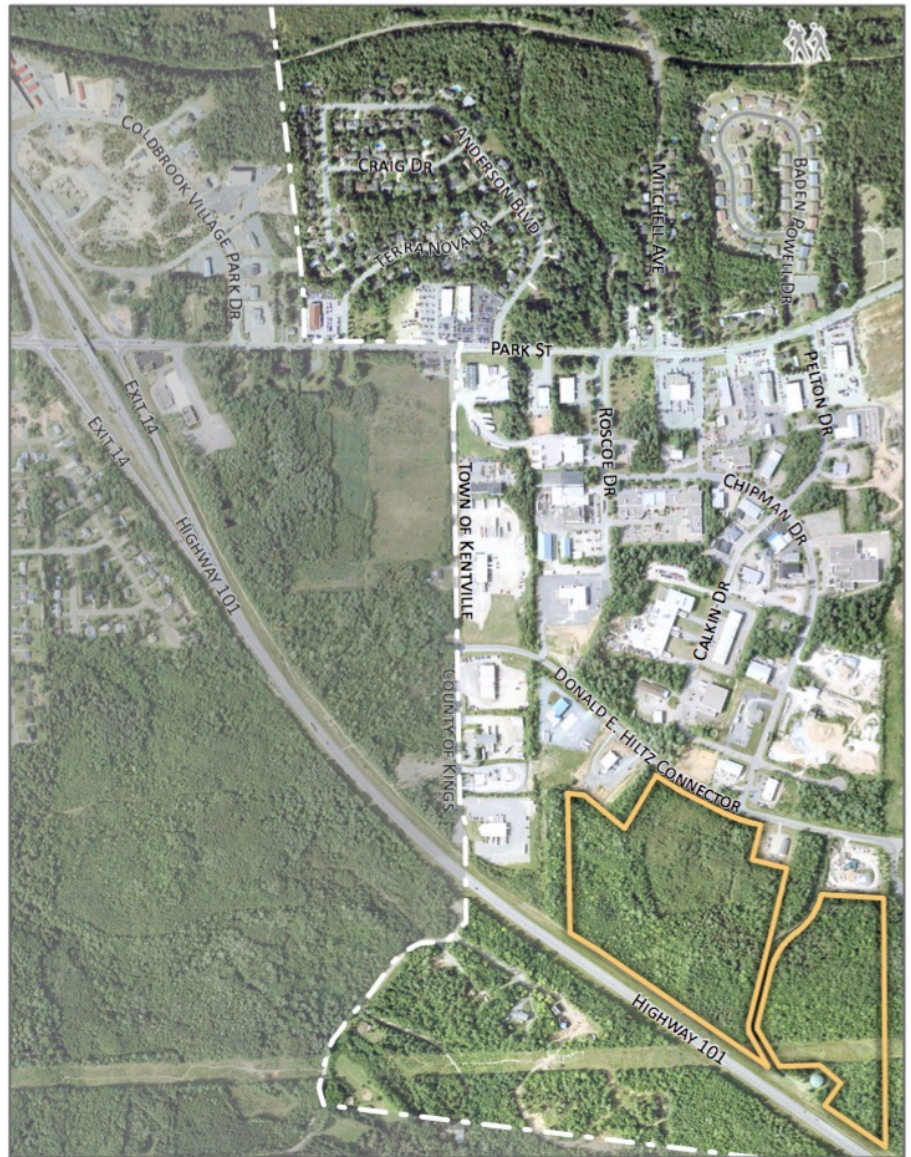
HIGHWAY 101 LOOKING EAST



CHIPMAN DR INTERSECTION LOOKING WEST



CHIPMAN DR INTERSECTION LOOKING EAST



The Annapolis Valley Regional Industrial Park, one of Kentville's most active business centers, was opened in September of 1979 and covers approximately 200 acres. The Park houses over 40 different businesses and is considered the economic core for businesses of all size and types. The Park houses large manufacturers and smaller service oriented businesses. Current land available in The Park for sale includes parcels with Highway 101 frontage which will provide high visibility and profile once developed. Industrial Park lands located in Kentville boast a special industrial tax rate equal to the commercial rate in Kings County. Lands in The Industrial Park can be subdivided to suit any size or need.



The Barnard Group
8999 Commercial Street,
New Minas, NS B4N 3E3
Prepared by Kirsten Harrison

Email: mike@thebarnardgroup.ca
Website: www.thebarnardgroup.ca

Call Us: 1-800-679-7099