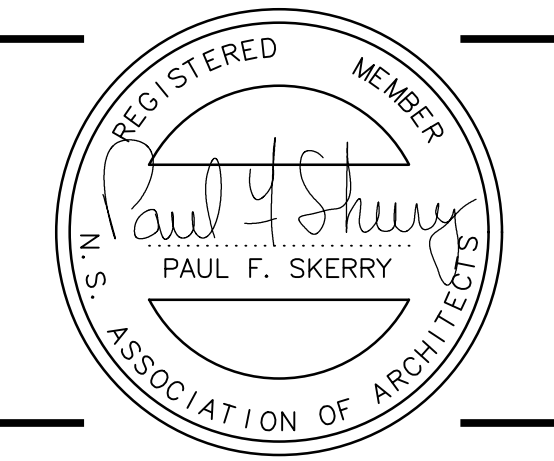


- NOTES:
- 1) THE CONTRACTOR IS RESPONSIBLE FOR CHECKING ALL DIMENSIONS ON SITE & REPORTING ANY DISCREPANCY TO THE ARCHITECT BEFORE PROCEEDING.
 - 2) DO NOT SCALE FROM DRAWINGS. USE FIGURED DIMENSIONS.
 - 3) DRAWING REPRESENTATIONS MAYBE IN VARIANCE W/ DETAILED SPECS. & SCHEDULES, IN WHICH CASE SPECS. & SCHEDULES OVERRIDE THE DRAWINGS.
 - 4) CHANGES FROM THESE PLANS & SPECS. MUST BE AGED TO IN WRITING, & APPROVED BY THE ARCHITECT & OWNER, BEFORE PROCEEDING.
 - 5) ONLY THOSE DRAWINGS MARKED APPROVED FOR CONSTRUCTION, SIGNED & DATED BY THE ARCHITECT ARE TO BE USED FOR CONSTRUCTION.
 - 6) THESE DRAWINGS ARE TO BE READ IN CONJUNCTION W/ THE SPECS.

Paul Skerry Associates Ltd.
ARCHITECTS
 5514 LIVINGSTONE PLACE
 HALIFAX N.S. B3K 2B9
 PHONE: 902-455-4361
 FAX: 902-455-7778
 EMAIL: pskerry@ns.sympatico.ca



3" MTM GRID
 CM 64'30" WEST

No.	DESCRIPTION	Date

REVISIONS

PROJECT

PROPOSED PROJECT
 RYAN'S PARK APARTMENTS
 SCHOOL STREET
 KENTVILLE, NS.

TITLE:

SITE PLAN

drawn by: STAFF	checked: PS
date: NOV 01/23	approved: PS
scale: 1:40	dwg #: A1.0
project #: 3090	