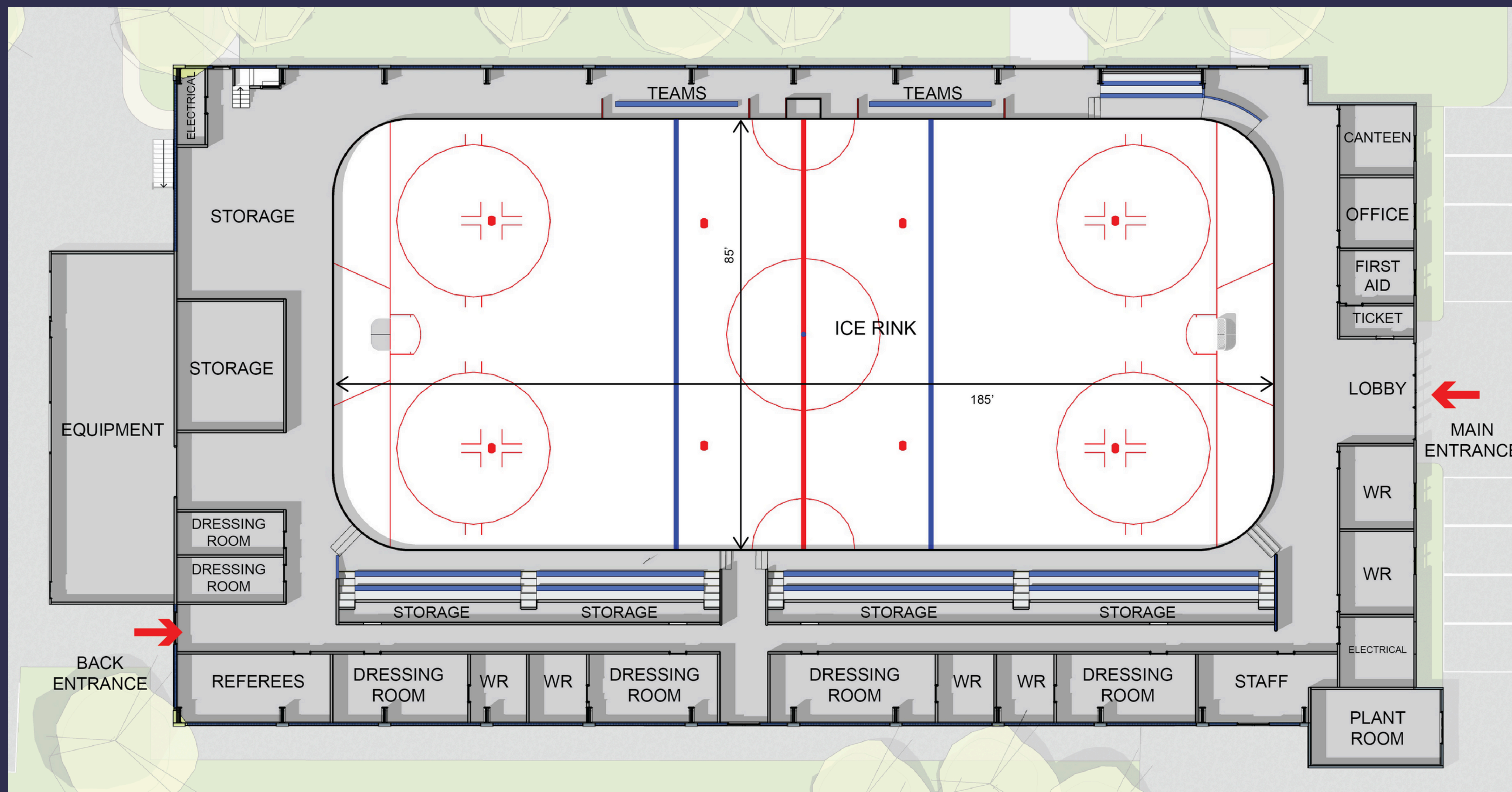
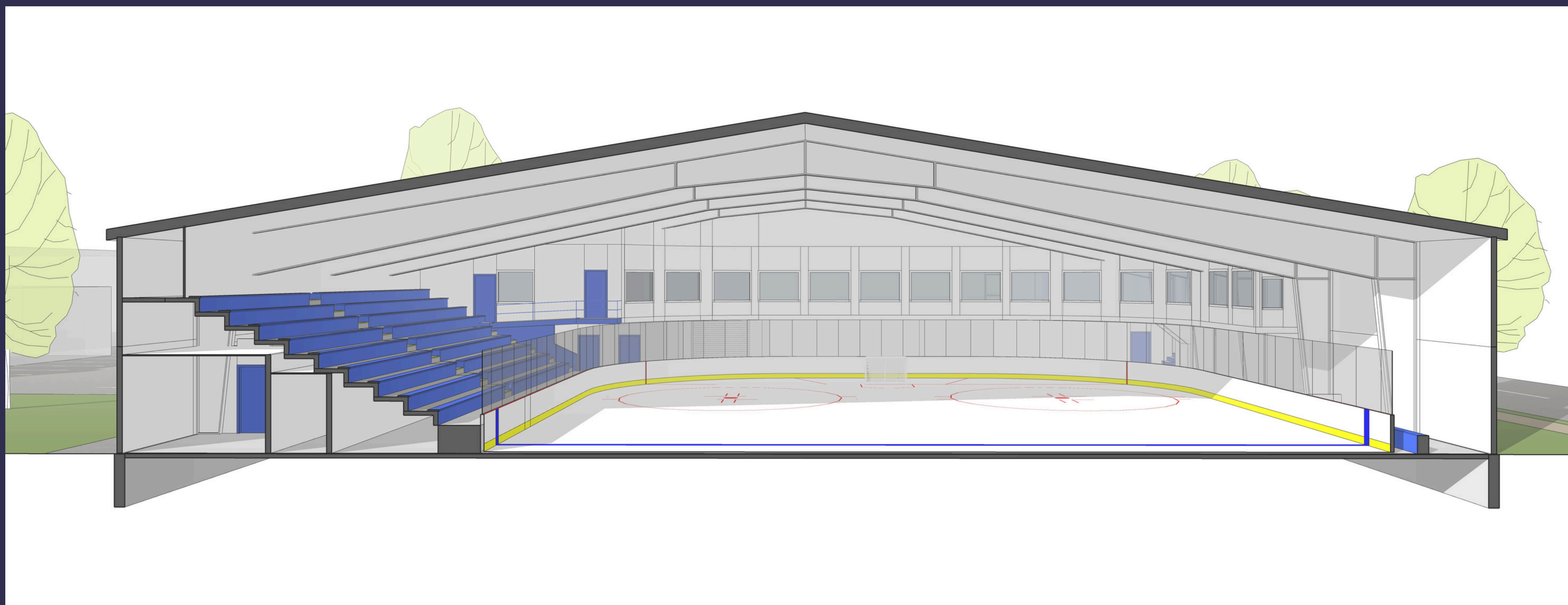


Option 1 – Accessibility Upgrades ONLY



There are no upgrades or additions to the arena other than accessibility upgrades. This only includes the list of recommended repairs that were included in the Building Condition Assessment to extend the lifetime of the building by another 25 years. All other existing conditions would remain the same.



Scan to complete the form
or visit: www.kentville.ca/arena

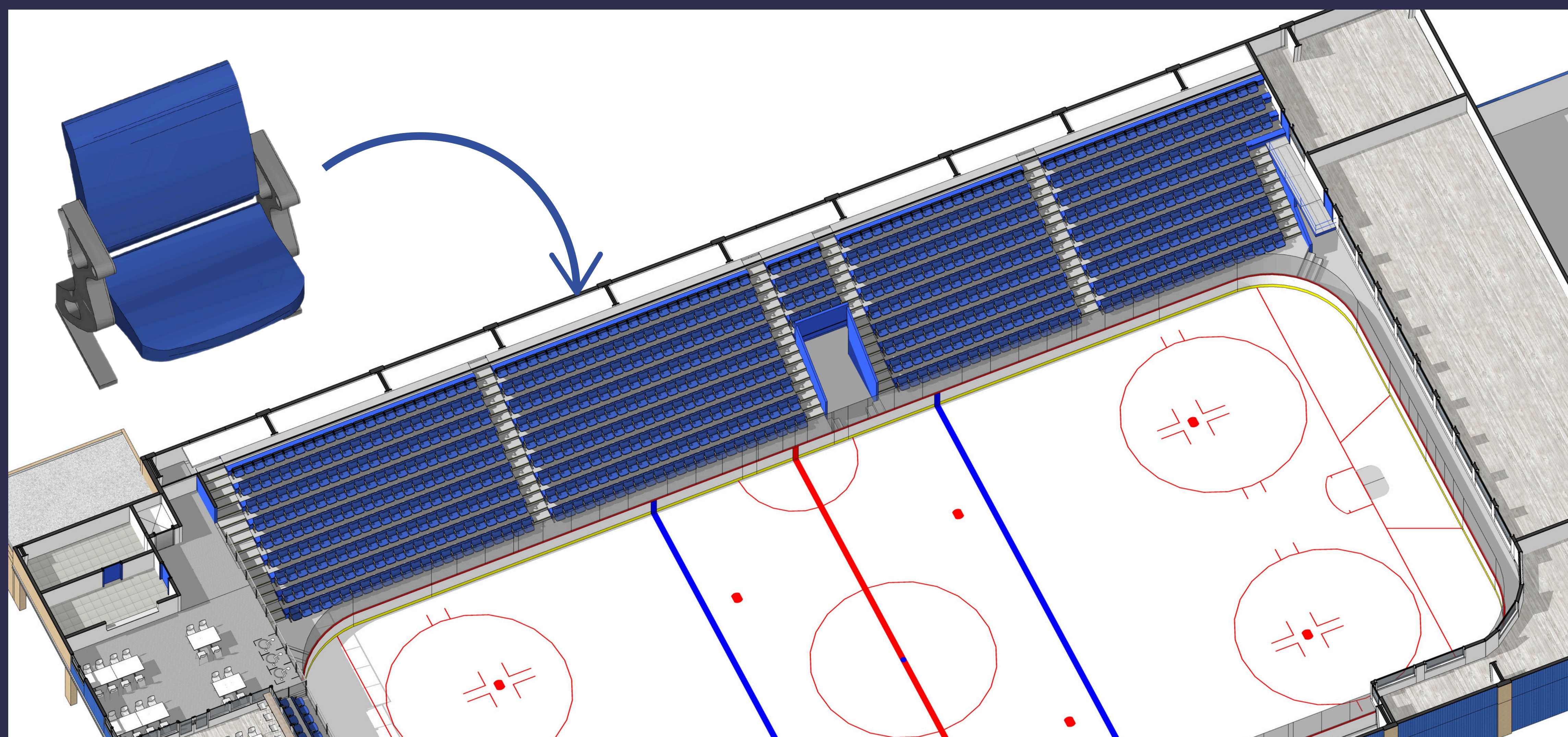
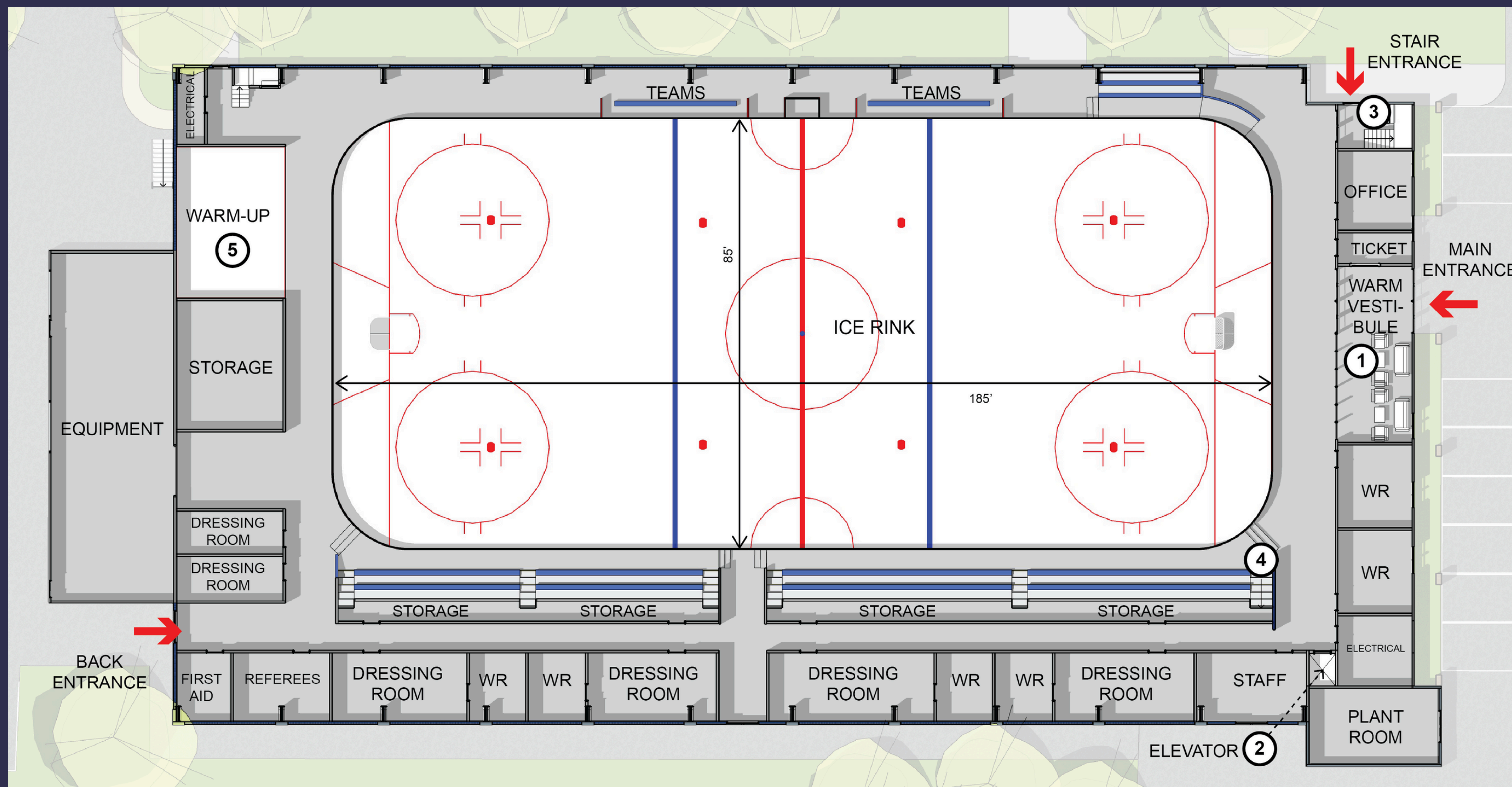


Kentville

Option 1A
Retrofit Existing
\$17 Million

Option 1B
**New Build/
Existing Location**
\$33 Million

Option 2 – Front Expansion



Scan to complete the form
or visit: www.kentville.ca/arena



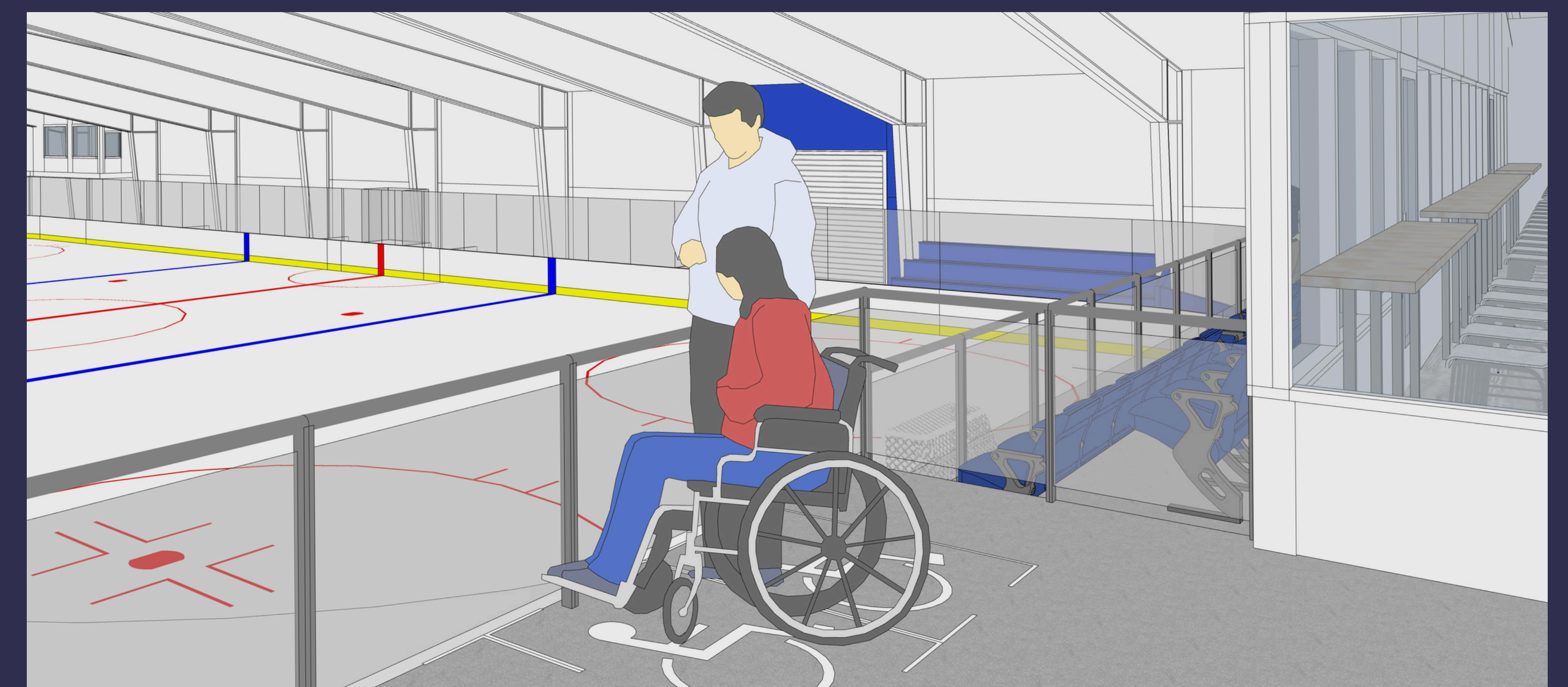
Kentville

Option 2A
Retrofit Existing
\$23 Million

Two Main Upgrades:

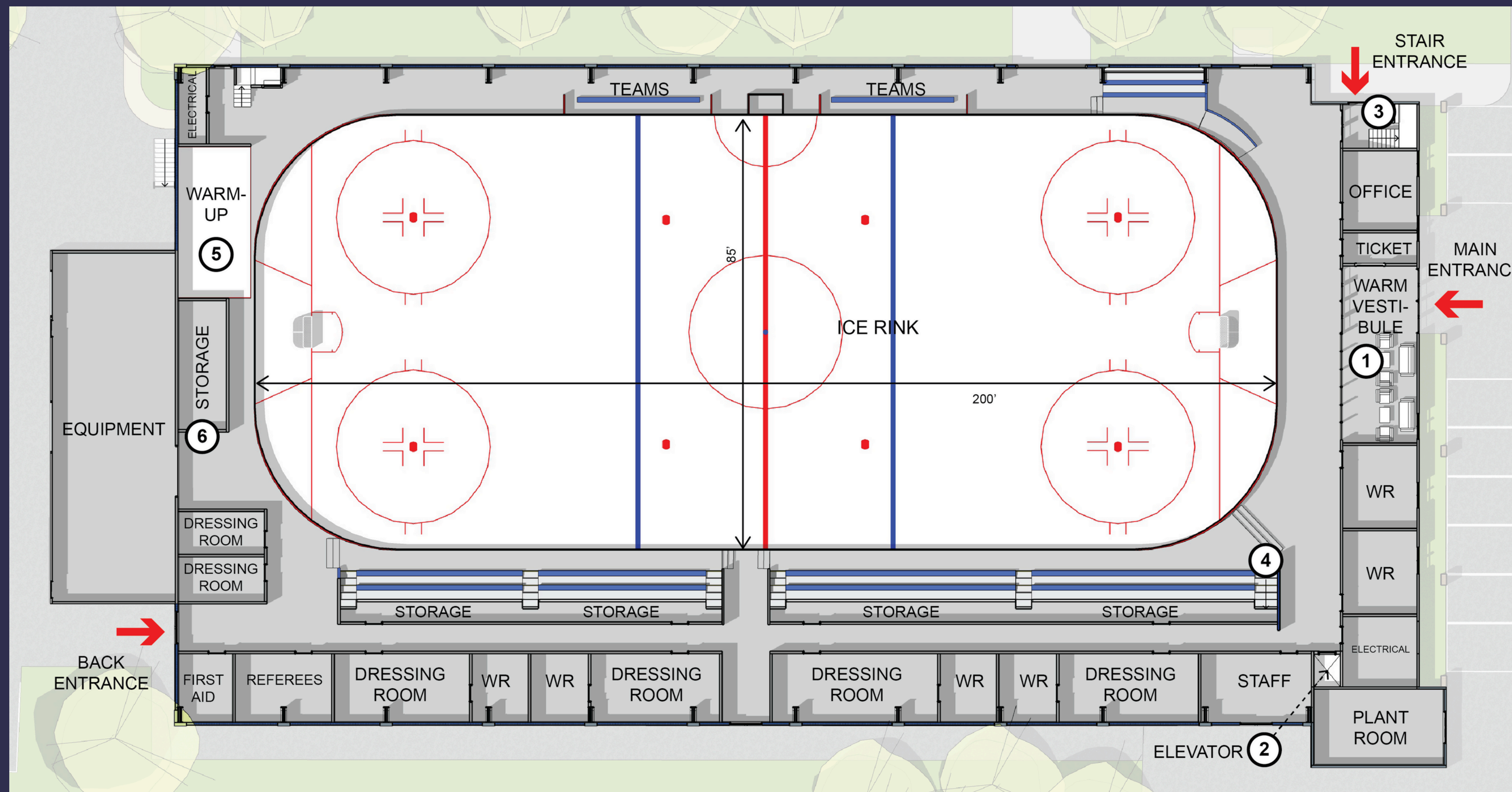
(including the upgrades from Option 1)

1. Expansion- Front mezzanine, VIP seating, multi function room, canteen, kitchen and elevator to front of building
2. Bleacher upgrade- Precast bleachers with fixed seating



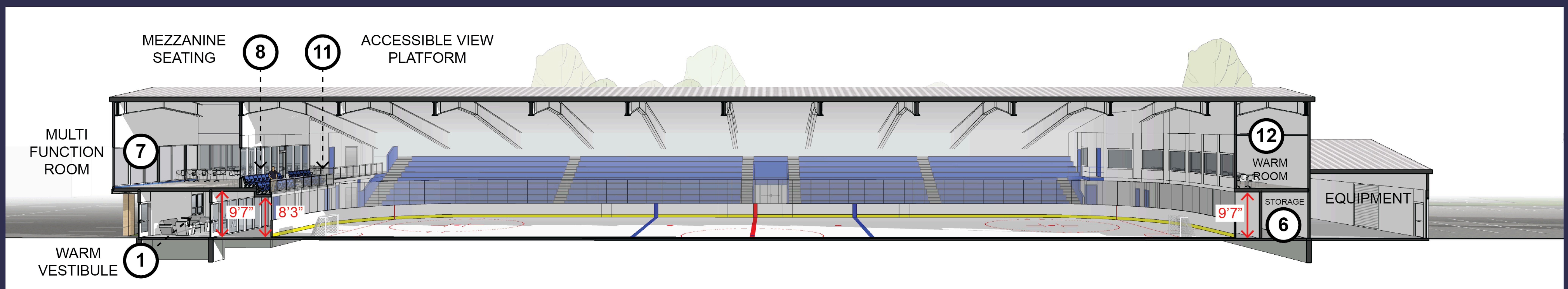
Option 2B
New Build/
Existing Location
\$35 Million

Option 3 – Ice Rink Extension



Two Additional Upgrades: (including the upgrades from Option 1 & 2)

1. Extend ice surface to become NHL-sized ice surface (from 185 ft to 200 ft)
2. Back additions: rear mezzanine, warm room, washroom, expanded storage



Scan to complete the form
or visit: www.kentville.ca/arena



Kentville

Option 3A
Retrofit Existing
\$27 Million

Option 3B
**New Build/
Existing Location**
\$37 Million

Option 4 & 5– New Build with Added Amenities (New Location)



Amenities:

1. Accessibility upgrades
2. NHL-sized rink
3. Comfortable seating
4. Warm vestibule (lobby)
5. New elevator
6. Warm up area
7. Multifunction room
8. Lounge
9. Expanded kitchen & canteen
10. Accessible view platform
11. Larger dressing rooms
12. Walking track
13. Expanded parking

Scan to complete the form
or visit: www.kentville.ca/arena



Kentville

Option 4
1 Ice Surface
\$59 Million

Option 5
2 Ice Surfaces
\$79 Million