



TOWN OF KENTVILLE

DEPARTMENT OF PLANNING & DEVELOPMENT

COMMUNITY & ECONOMIC DEVELOPMENT

INVITATION TO TENDER

Community Gateway Signs

Issue Date: July 20, 2020

Closing Date: August 3, 2020

Closing Time: 2:00 pm

Tender Address:

Offices of the Town of Kentville

354 Main, Kentville, NS B4N 1K6

Owner's Representative:

Lindsay Young, Community & Economic Development Coordinator

lyoung@kentville.ca

Attached are specifications for 4 Community Gateway Signs to be fabricated and installed for the Town of Kentville. Tenders must be submitted in .pdf or word document via email before 2:00 p.m., August 3, 2020 to:

lyoung@kentville.ca

Please label the email "GATEWAY SUBMISSION" using the subject line and include the proposal document as an attachment. Hard copies are not being accepted at this time. Tenders submitted in hard copy may not be considered.

The Town of Kentville reserves the right to accept or reject any or all tenders, not necessarily accept the lowest tender, or to accept any tender which it may consider to be in its best interest. Overall suitability, timeline for completion, and confidence in the vendor to deliver are all scored factors of evaluation in addition to the purchase price.

Tenders that are unsigned, incomplete, conditional, illegible, unbalanced, obscure, or that contain irregularities of any kind may be rejected as informal.

The supplier guarantees that all equipment covered by or supplied pursuant to the quotation shall comply with some or all specifications for said product. Tenderers should include details of the guarantee/warranty and servicing agreement.

Tenderers are requested to tender on product specified: however, if in the Tenderer's opinion, improvements in either performance or economy can be affected by departures, they may be offered as alternatives and may be given consideration.

Tender must be valid for acceptance for a 30 day period from time of tender closing.

Sign specifications are found in the attached drawings. While not specifically required, the buyer is interested to have included a mechanism for solar lighting. It would be attractive to the buyer for tenderers to include provision for a 100-watt solar panel with battery and charging system to power 12v LEDS.

Tenders submitted which include modifications or deviations from the provided specifications may be considered, however such modifications or deviations must be clearly stated in the tender application and justification for such modifications must also be clearly outlined for the benefit of the evaluation committee.

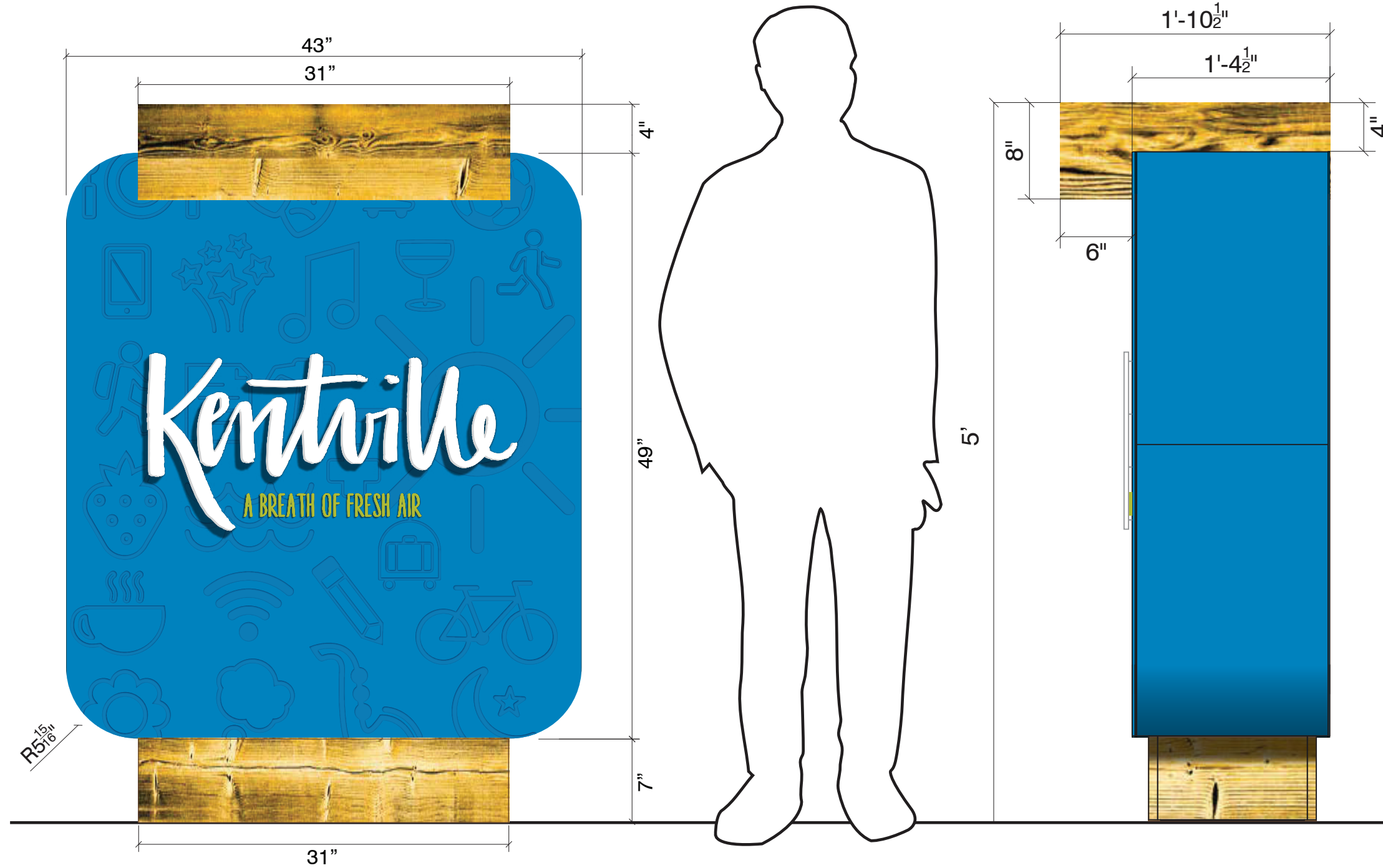
TENDERER INFORMATION:

Name of Corporation Tendering: _____

Address: _____

Telephone: _____

Signature of Applicant: _____



1 FRONT ELEVATION
A SCALE: 1" = 10"

1 SIDE ELEVATION
B SCALE: 1" = 10"

SPECS

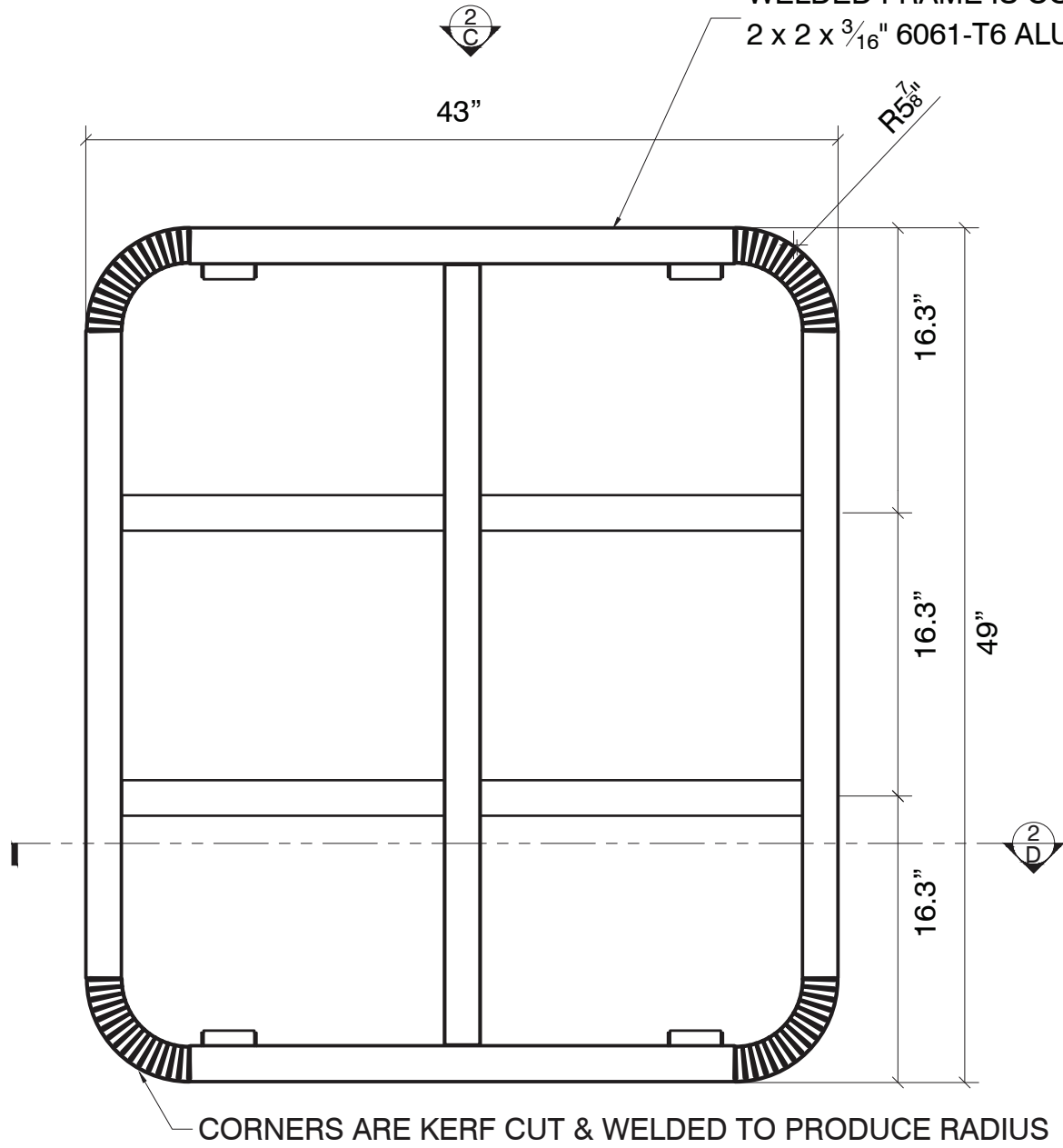
Manufacture & install on existing bases in Kentville, NS four (4) single-sided LED illuminated aluminum monument sign with wooden valance to conceal LED down-lighting, and wooden skirt as shown.

- Background graphics to be CAD cut from 1/4" aluminum.
- "Kentville" to be 3/8" painted laser-cut acrylic letters that are stud mounted with 1/2" spacers.
- "Tag line" to be 1/4" painted laser-cut acrylic letters that are flush mounted to sign face.

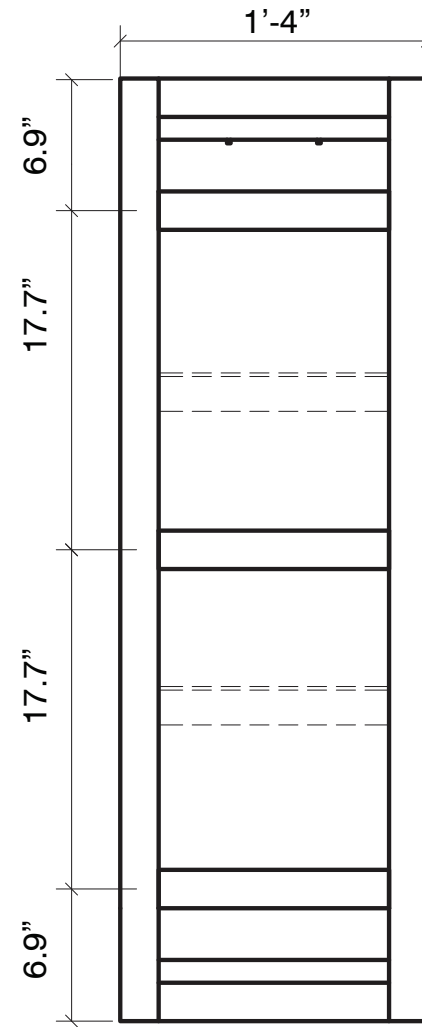
Paint Colours:

- Pantone Process Blue C (sign cabinet)
- Pantone 390 C (tag line)
- White (Kentville)

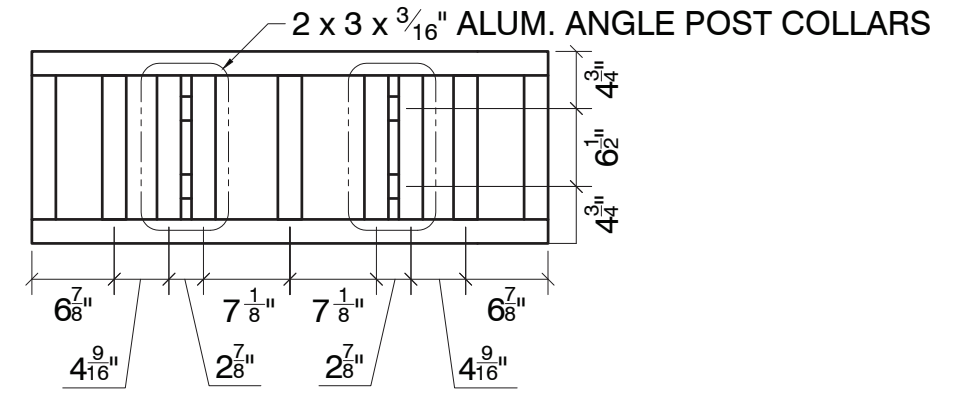
WELDED FRAME IS CONSTRUCTED FROM
 2 x 2 x 3/16" 6061-T6 ALUMINUM ANGLE (EXCEPT WHERE NOTED)



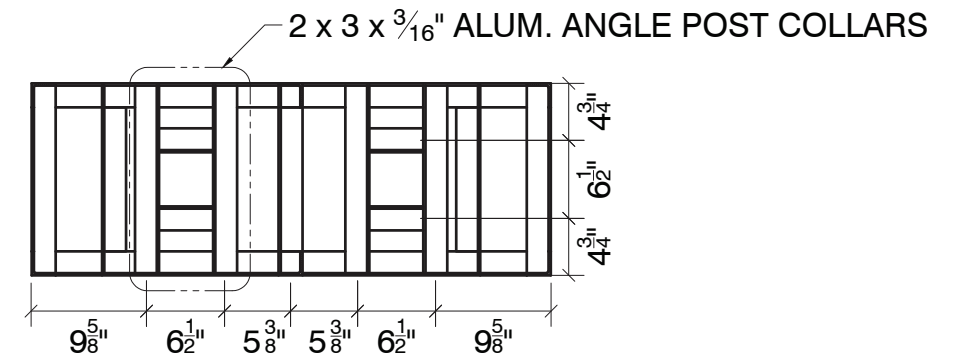
2 FRONT VIEW FRAME DETAIL
 A SCALE: 1" = 10"



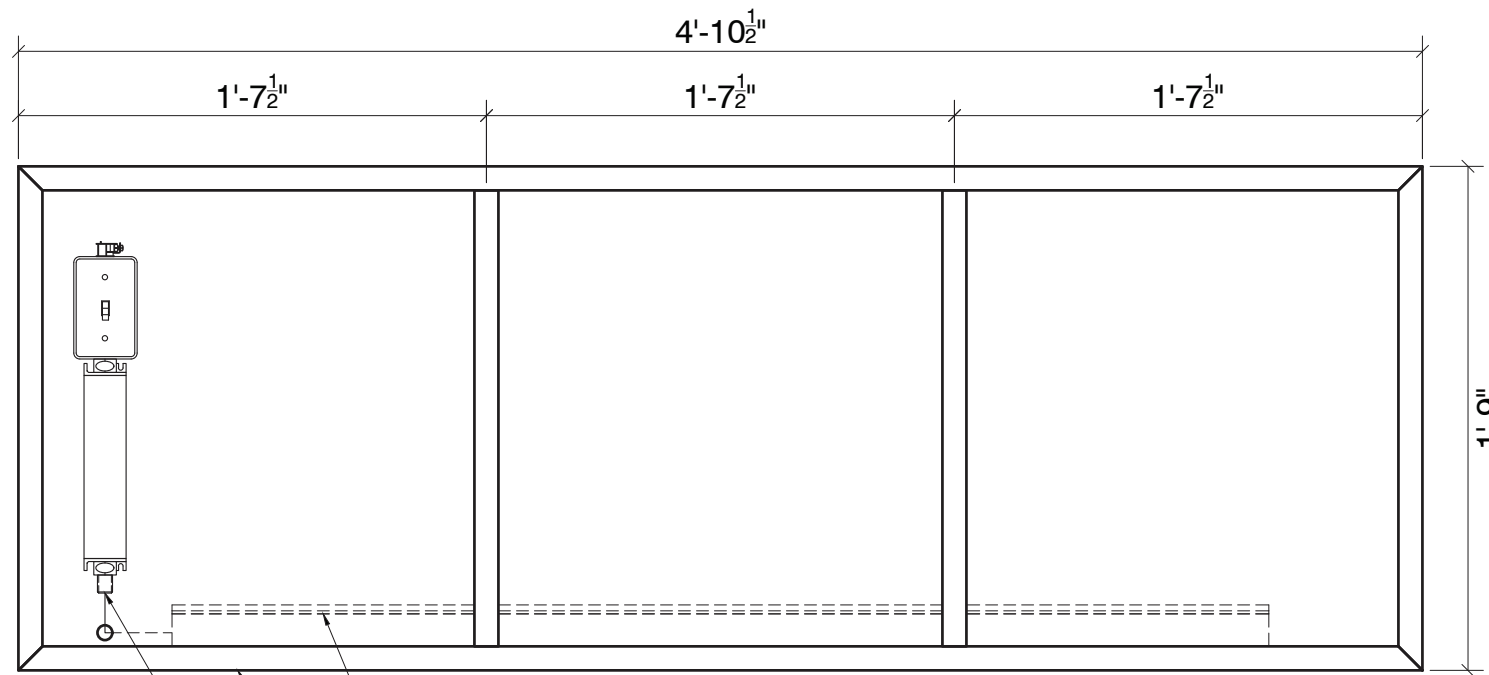
2 SIDE VIEW FRAME DETAIL
 B SCALE: 1" = 10"



2 TOP VIEW FRAME DETAIL
 C SCALE: 3/4" = 1"

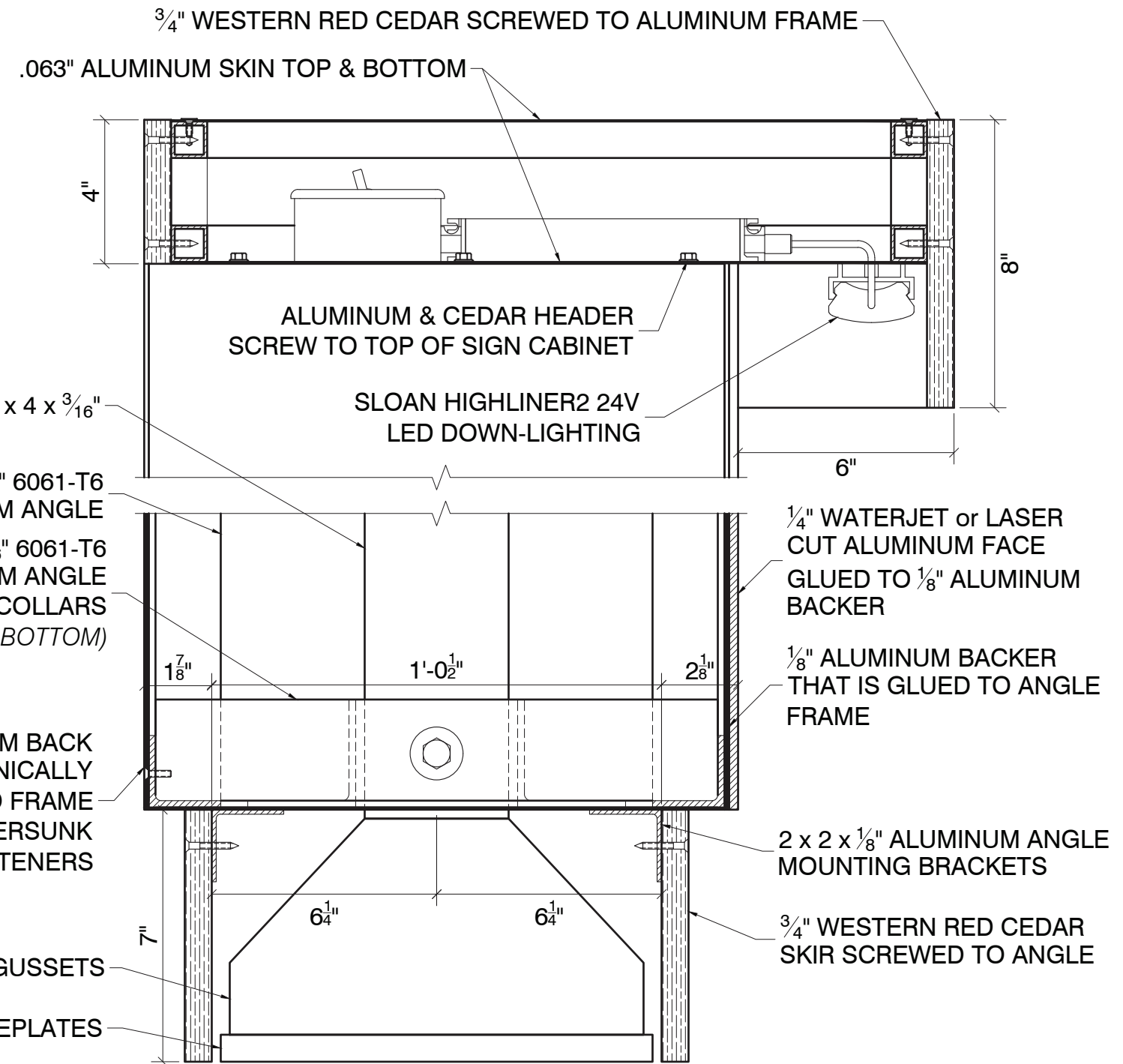


2 SECTION VIEW FRAME DETAIL
 D SCALE: 3/4" = 1"



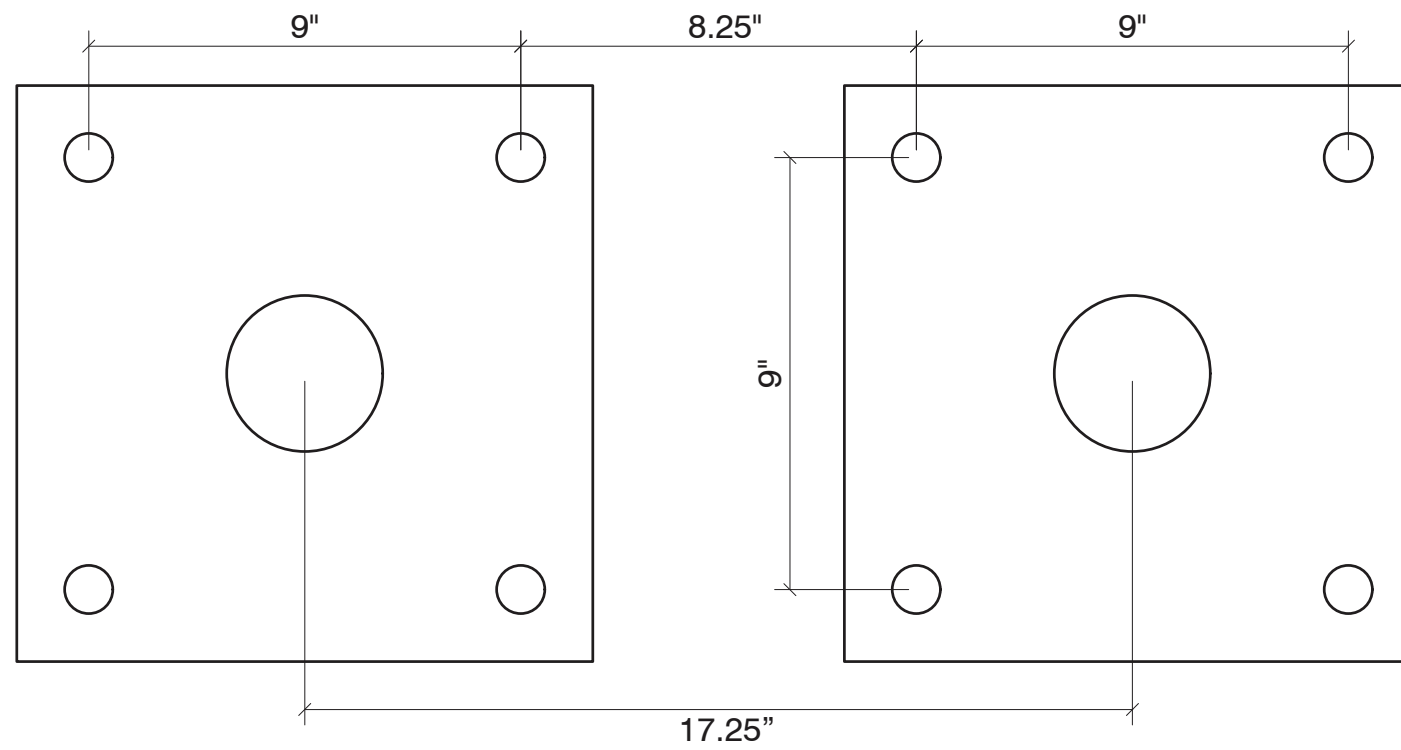
- SLOAN HIGHLINER2 24V LED DOWN-LIGHTING BELOW
- WELDED 1 x 1 x 1/8" ALUMINUM TUBE FRAME
- SLOAN 24V POWER SUPPLY & ON/OFF SWITCH

3 TOP VIEW HEADER DETAIL
A SCALE: 1 1/2" = 1'

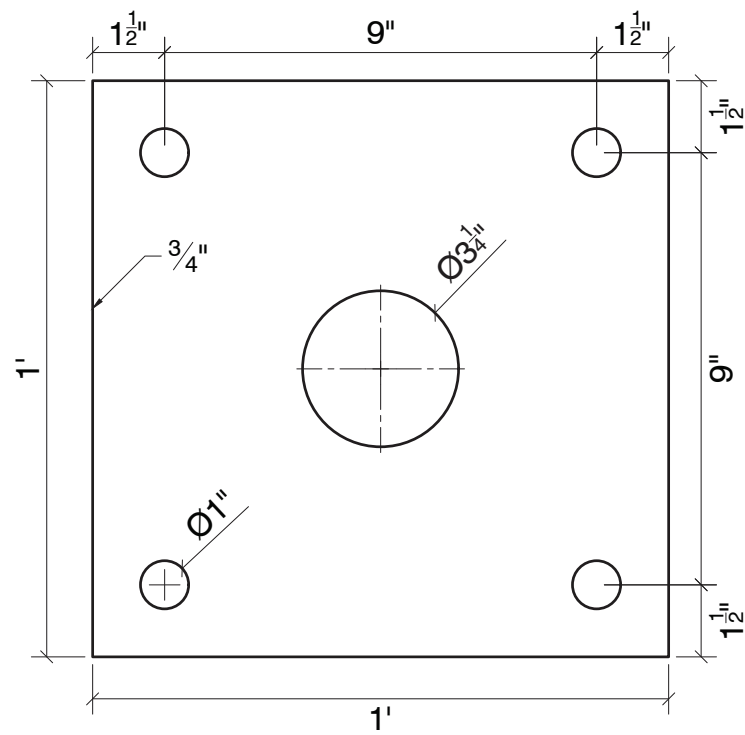


- 3/4" WESTERN RED CEDAR SCREWED TO ALUMINUM FRAME
- .063" ALUMINUM SKIN TOP & BOTTOM
- 4"
- 8"
- ALUMINUM & CEDAR HEADER SCREW TO TOP OF SIGN CABINET
- SLOAN HIGHLINER2 24V LED DOWN-LIGHTING
- 6"
- HSS 4 x 4 x 3/16"
- 2 x 2 x 3/16" 6061-T6 ALUMINUM ANGLE
- 2 x 3 x 3/16" 6061-T6 ALUMINUM ANGLE POST COLLARS (TOP & BOTTOM)
- 1/8" ALUMINUM BACK IS MECHANICALLY FASTENED TO FRAME USING COUNTERSUNK FASTENERS
- 1/4" WATERJET or LASER CUT ALUMINUM FACE GLUED TO 1/8" ALUMINUM BACKER
- 1/8" ALUMINUM BACKER THAT IS GLUED TO ANGLE FRAME
- 2 x 2 x 1/8" ALUMINUM ANGLE MOUNTING BRACKETS
- 3/4" WESTERN RED CEDAR SKIR SCREWED TO ANGLE
- 18"
- 1'-0 1/2"
- 28"
- 6 1/4"
- 6 1/4"
- 7"
- 3/8" STEEL GUSSETS
- 3/4" STEEL BASEPLATES

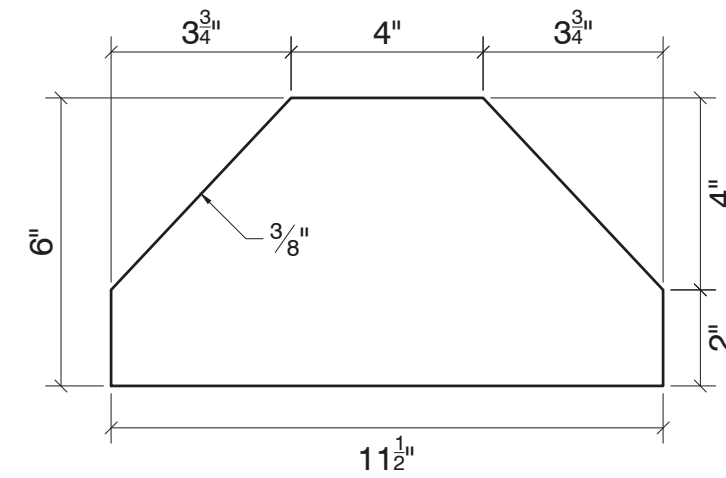
3 SIGN CROSS-SECTION
B SCALE: 3" = 1'



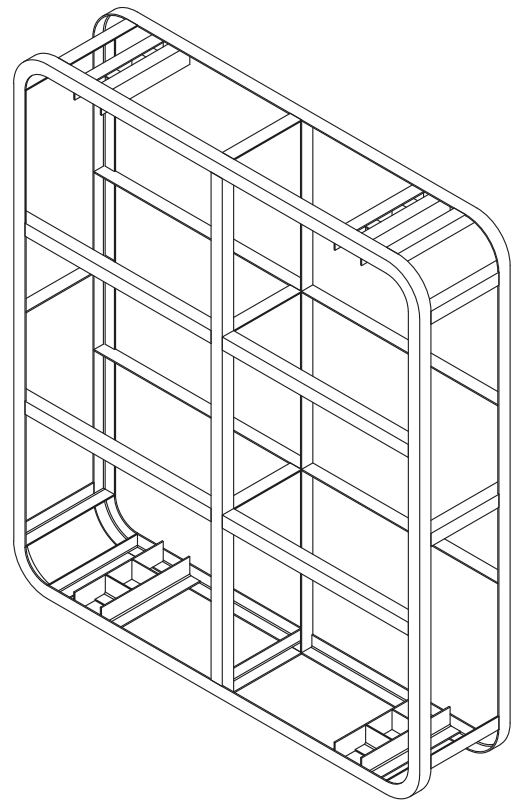
4 ANCHOR ROD LAYOUT
A SCALE: 3" = 1"



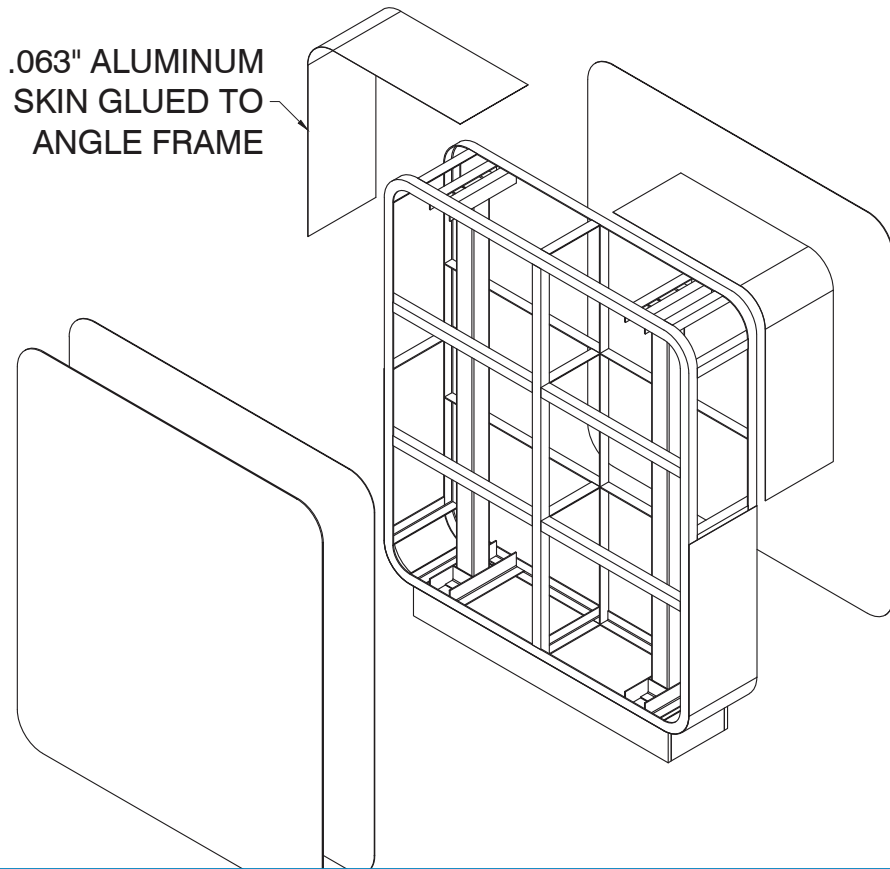
4 BASEPLATE DETAIL
B SCALE: 3" = 1"



4 GUSSET DETAIL
C SCALE: 3" = 1"



.063" ALUMINUM
SKIN GLUED TO
ANGLE FRAME



REMOVABLE .063" ALUMINUM
TOP FOR POWER ACCESS

